



# Proposal Document

## Proposal:

**To alter the school catchment area boundaries for Greenbrae School and Glashieburn School, so that an area of land to the west of Dubford Road, and an area of land which includes Lochside Road and Lochside Drive, are moved from the Greenbrae School catchment area to the Glashieburn School catchment area, with effect from 1 August 2023.**

The schools affected by these proposals are:

**Greenbrae School  
Glashieburn School**

## Statutory Consultation Period

**Monday 7 November 2022 to Thursday 22 December 2022 (inclusive)**

All submissions expressing views on the proposals detailed in this document should be made online, in writing or via email by Thursday 22 December 2022.

It is intended to respond to issues raised during this consultation within a report to be presented to the Education and Children's Services Committee at its meeting on 21 March 2023.

# Contents

1. List of Consultees
2. Background
3. The Proposal
4. The Affected Schools
5. Educational Benefits
6. Additional Information
7. Public Meeting
8. Submission of Views
9. Outcome of Consultation
10. Appendix 1

## 1. LIST OF CONSULTEES

Notice of the issuing of this Proposal Document will be provided to:

- The Parent Councils of the affected schools
- The parents of the pupils at the affected schools
- The parents of children expected to attend an affected school within 2 years of the date of publication of this Proposal Document
- The pupils at the affected schools
- The teaching and support staff at the affected schools
- The trade unions representatives of the above staff
- The Community Councils for the areas affected
- The constituency MSPs
- Regional MSPs for the area
- The Constituency MPs
- Community Planning Partnership Board
- Chief Education Officer, Aberdeen City Council

A copy of this Proposal Document is available on the Aberdeen City Council website:

[www.aberdeencity.gov.uk/schoolsconsultations](http://www.aberdeencity.gov.uk/schoolsconsultations)

The document is available in alternative formats or in translated form for readers whose first language is not English. Please apply to Corporate Landlord, Marischal College, Broad Street, Aberdeen, AB10 1AB, by telephone on 07920 295364; or by e-mail:

[schoolestate@aberdeencity.gov.uk](mailto:schoolestate@aberdeencity.gov.uk)

## STATUTORY CONSULTATION

### 2. BACKGROUND

- 2.1 Aberdeen City Council has reshaped its service delivery model, aiming to deliver its services in a more collaborative, joined-up way. The model is underpinned by the principles of strengthening transparency, accountability, engagement, inclusiveness, shared vision and values, and a commitment to joint learning. This will allow us to ensure that decisions are taken holistically, taking into account the impact on the direct delivery of services and the wider potential benefits to the citizens of Aberdeen.
- 2.2 Under this model, the Council is reviewing and forward planning for its entire estate holistically, rather than considering the education estate in isolation. This approach will ensure that our financial responsibilities and educational responsibilities are fully met whilst providing opportunities for the delivery of public statutory services in the future. It will also maximise the use of available resource in delivering statutory services, and the priorities outlined within the Local Outcome Improvement Plan.
- 2.3 The Local Outcome Improvement Plan sets out a vision for Aberdeen City where all people can prosper. This reflects our desire to help all people, families, businesses and communities to do well, succeed and flourish in every aspect.
- 2.4 This proposal contributes to the key priorities and themes for Aberdeen, as they are set out in the Local Improvement Plan:
- **Prosperous People:** Through ensuring children have access to high quality learning and teaching through managing sustainable school rolls, we can assist in ensuring they have the **best start in life**, that they are **safe and responsible**, and **respected, included, and achieving**.
  - **Prosperous Place:** Through engaging and consulting with communities on the future of the school estate within their localities, we can help to develop **empowered, resilient and sustainable communities**.

#### Our Vision for the School Estate

- 2.5 Aberdeen City Council's School Estate Plan, approved by the Education Operational Delivery Committee in September 2022, sets out the recommended actions to be taken to develop the school estate over the next ten years and beyond, supporting the principles of the National Learning Estate Strategy.
- 2.6 Aberdeen City Council's vision is for our buildings and grounds to be used to deliver highly effective learning experiences and to support pupil, staff and community wellbeing within and outwith school hours. Across Aberdeen City, we will make the best use of our facilities to ensure sustainable, transparent and equitable allocation of resources to support the learning needs of all. As a result, our facilities will support our ambition to ensure each and every learner has the opportunity to attain and achieve a wide range of qualifications and develop the skills for life, learning and work.

2.7 To achieve this vision the school estate will be utilised to provide:

- sufficient capacity to meet current and future demand for school places;
- safe, nurturing and inclusive environments for all;
- stimulating and inspiring learning environments which encourage curiosity and a commitment to lifelong learning;
- flexible and adaptable spaces which can respond to the changing needs of pupils and communities;
- buildings which are environmentally and economically sustainable;
- appropriate multi-agency spaces to support close partnership working.

### **3. THE PROPOSAL**

3.1 In common with other Scottish local authorities, school enrolment in Aberdeen City is based on the principle of catchment areas, commonly referred to as 'zones'. The current catchment areas for Greenbrae School and Glashieburn School are illustrated in Map A at Appendix 1 of this document. Children whose home address falls within the area of land defined as the Greenbrae catchment area, are entitled to attend Greenbrae School, whilst children who live within the Glashieburn catchment area are entitled to a place at Glashieburn School.

3.2 The Council regularly carries out a school roll forecasting exercise, to predict future changes in pupil numbers at each of the schools in the city, to help ensure that schools will have sufficient capacity to accommodate the numbers of pupils expected to be living within their catchment areas in future years. The current school roll forecast indicates that the number of pupils attending Greenbrae School is increasing, and it is expected that there will not be sufficient space at the school to accommodate all of these pupils in the future.

3.3 Conversely, the forecasts indicate that the number of pupils who will be attending Glashieburn School in the future is decreasing, and the school will therefore have excess unused capacity in future years.

3.4 To help address these issues and ensure that all children in this area of the city will have access to schools with sufficient space in the future, it is proposed that the school catchment areas are adjusted (rezoned), so that some areas of land which are currently included within the Greenbrae School catchment area, are instead included within the Glashieburn School catchment area. The proposed new catchment areas are illustrated in Maps B and C at Appendix 1 of this document.

3.5 If this proposal is accepted, this would mean that in future, children living within the areas affected by the change would be entitled to attend Glashieburn School, and not Greenbrae School. This would help to balance pupil numbers across the two schools, and avoid the number of pupils at Greenbrae School exceeding its available capacity.

3.6 The anticipated effects of the proposed changes on the schools concerned are described below.

### **4. THE AFFECTED SCHOOLS**

#### **Greenbrae School**

4.1 The table below shows the estimated numbers of pupils expected to be attending Greenbrae School in the future, based on the most recently available data.

<b>Greenbrae School Pupil Numbers (P1-7)</b>	2023	2024	2025	2026	2027	2028
Current Forecast <i>(if no changes are made to catchment areas)</i>	<b>358</b>	<b>385</b>	<b>386</b>	<b>386</b>	<b>352</b>	<b>367</b>
Revised Forecast <i>(if proposed changes to catchment areas are accepted)</i>	<b>352</b>	<b>362</b>	<b>356</b>	<b>351</b>	<b>312</b>	<b>325</b>

4.2 The pupil capacity of Greenbrae School is **342**, and the current pupil roll this school year (excluding nursery pupils) is **337**. The table shows that, with no changes to the existing school catchment area, the pupil roll is expected to continue to rise over the next three years, and that it will significantly exceed the school's capacity from 2023 until at least 2028.

4.3 If the proposals are accepted, the pupil numbers are still expected to temporarily exceed the school's capacity until 2026. However, this will be to a lesser extent, and the pupil numbers are likely to be more manageable, than the higher numbers of pupils which would require to be accommodated at the school if no changes to the school zones are made.

4.4 Additional temporary classroom capacity at the school has already been created, to ensure classes can be accommodated, and consideration will be given to providing further temporary accommodation if this becomes necessary, until pupil numbers fall back within the school's permanent capacity (expected to be from 2027). However, the extent to which additional capacity can be provided on the school site is limited, and it would not be possible to fully accommodate the additional pupils forecast to be attending the school in the longer term if no changes to the catchment zones are made.

4.5 The revised forecast above is based on the number of children below school age who are known to be living within the areas of the Greenbrae School catchment area which are proposed to be rezoned to the Glashieburn school catchment area. If the proposals are accepted, these children would be expected to be enrolled at Glashieburn School when reaching school age, and so they have been removed from the forecast for Greenbrae School.

4.6 Children living within the areas which are proposed to be rezoned who are already attending Greenbrae School at the time any decision to adjust the school zones is implemented, will have the option to remain at Greenbrae School; they will not be expected to move schools as a result of the proposed changes.

4.7 Similarly, if the proposal is accepted, any child living in the areas to be rezoned who reaches primary school age after the changes to the zone boundaries are implemented, and who at that time has an older sibling who attends Greenbrae School, would have the option of also attending Greenbrae School, in order to keep family groups together.

### **Glashieburn School**

4.8 The table below shows the numbers of pupils expected to be attending Glashieburn School in the future, based on the most recently available data.

<b>Glashieburn School Pupil Numbers (P1-7)</b>	2023	2024	2025	2026	2027	2028
Current Forecast <i>(if no changes are made to catchment areas)</i>	<b>207</b>	<b>196</b>	<b>186</b>	<b>172</b>	<b>146</b>	<b>129</b>
Revised Forecast <i>(if proposed changes to catchment areas are accepted)</i>	<b>213</b>	<b>220</b>	<b>217</b>	<b>209</b>	<b>189</b>	<b>174</b>

- 4.9 The pupil capacity of Glashieburn School is **428**, and the current pupil roll this school year (excluding nursery pupils) is **226**. The table shows that, if the proposal to make changes to the school zones is accepted, there would still be sufficient capacity at the school to accommodate the increased numbers of pupils expected to be attending the school.
- 4.10 The revised forecast above is based on the number of children below school age who are known to be living within the areas of the Greenbrae School catchment area which are proposed to be rezoned to the Glashieburn school catchment area. If the proposals are accepted, these children would be expected to be enrolled at Glashieburn School when reaching school age, and so they have been added to the forecast for Glashieburn School.

## 5. EDUCATIONAL BENEFITS

- 5.1 The proposals described in this document will have the following benefits:
- The schools affected by the proposals will have more viable, and therefore sustainable, pupil rolls, which would help remove anxiety for parents and pupils in securing a school placement and therefore support the health and wellbeing of children and families.
  - The proposal will ensure that siblings can attend the same school and families can fully benefit from parental involvement and engagement, in keeping with the Local Authority Parental Involvement and Engagement Plan.
  - A more viable and sustainable roll will ensure that staffing can be more effectively planned and maintained through the use of permanent contracts. Having sufficient staff in place well in advance of a school year will support the planning and delivery of high quality learning, teaching and assessment and delivery of effective transition and handover arrangements. It will also enable departments to be more equally balanced so that staff can be well supported by identified promoted staff.
  - The more equal distribution of children across year groups will enable more effective planning for children and allow teaching staff to benefit from opportunities for collaborate planning which is known locally to maximise opportunities and quality of learning for children.
  - If implemented, this proposal will assist Aberdeen City Council in delivering city wide primary education in schools with sustainable pupil rolls, and in a way which ensures that all pupils are educated in buildings which are not over-crowded and therefore conducive to the delivery of Curriculum for Excellence.
- 5.2 The implementation of this proposal would therefore help to maximise the educational benefits for pupils attending the schools affected.

## 6. ADDITIONAL INFORMATION

6.1 Relevant information relating to this consultation can be accessed at:

[www.aberdeencity.gov.uk/schoolsconsultations](http://www.aberdeencity.gov.uk/schoolsconsultations)

**If you want this document translated into another language or format (including Braille, large print, audio disk or BSL DVD) please contact us via email or telephone number listed below.**

Jeżeli ten dokument jest wymagany w innej wersji językowej lub formacie (w dużym druku lub na dyskiecie audio) proszę się skontaktować z

إذا كنت تود الحصول على هذه الوثيقة مترجمة إلى لغة أخرى أو بشكل آخر (مثلا بالخط العريض أو القرص السمعي) فالرجاء الإتصال:

Если Вы хотите получить этот документ, переведенным на другой язык или в другом формате (крупным шрифтом или на звуковом диске), пожалуйста, свяжитесь по

Jei jūs norite susipažinti su šiuo dokumentu jūsų kalba ar gauti jį kitokiame formate (Didelėmis raidėmis ar audio disku), prašau susisiekti

Dacă doriți ca acest document să fie tradus într-o altă limbă sau într-un alt format (scris mare sau format audio), vă rugăm contactați

如果你需要把文件翻译成另一种语言或者把文件变成另一种格式（大号字体或声盘），请通过以下的邮件或电话方式联系我们。

Ma tha thu ag iarraidh eadar-theangachadh den sgrìobhainn seo ann an cànan neo cruth eile (clò mòr neo clàr clastinneach) feuch an cuir thu fios gu

**If you are deaf or have a hearing impairment, you can still communicate with the Council via Text Relay by dialling 18001 + telephone number:**

**07920 295364**



6.2 A copy of this statutory consultation document will be available for public viewing during the period of consultation at the following venues:

Central Library  
Bridge of Don Library  
Greenbrae School  
Glashieburn School

## 7. PUBLIC MEETING

7.1 A public meeting to discuss the proposals will take place on:

**Wednesday 30 November 2022, from 7.00pm to 8.00pm at Greenbrae School.**

## 8. SUBMISSION OF VIEWS



8.1 Any interested stakeholders may respond to the consultation online, via the Council's Consultation Hub: <https://consultation.aberdeencity.gov.uk/>

Alternatively, comments can be submitted by sending an email to:

[schoolestate@aberdeencity.gov.uk](mailto:schoolestate@aberdeencity.gov.uk)

Or by writing to:

Greenbrae and Glashieburn Schools Rezoning 2022 Consultation, Resources, Corporate Landlord, Aberdeen City Council, Business Hub 10, Second Floor South, Marischal College, Broad Street, ABERDEEN AB10 1AB

**All responses should be submitted by Thursday 22 December 2022.**

## **9. OUTCOME OF CONSULTATION**

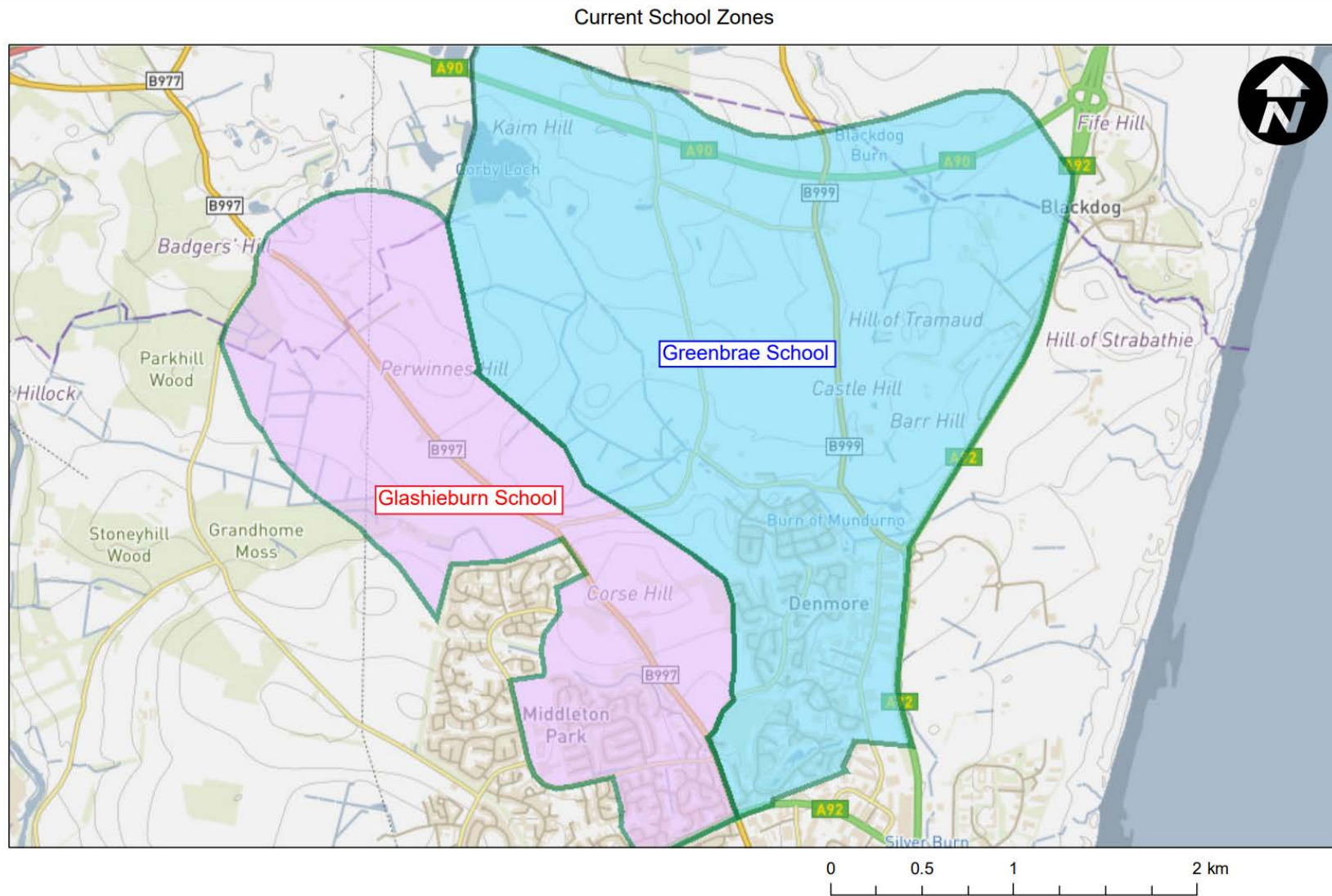
9.1 A summary of submissions will be published on the council website at

[www.aberdeencity.gov.uk/schoolsconsultations](http://www.aberdeencity.gov.uk/schoolsconsultations)

9.2 A report on the consultation will be delivered to the Education and Children's Services Committee at its meeting on 21 March 2023. This will provide information to enable Members to make a final decision on the proposal.

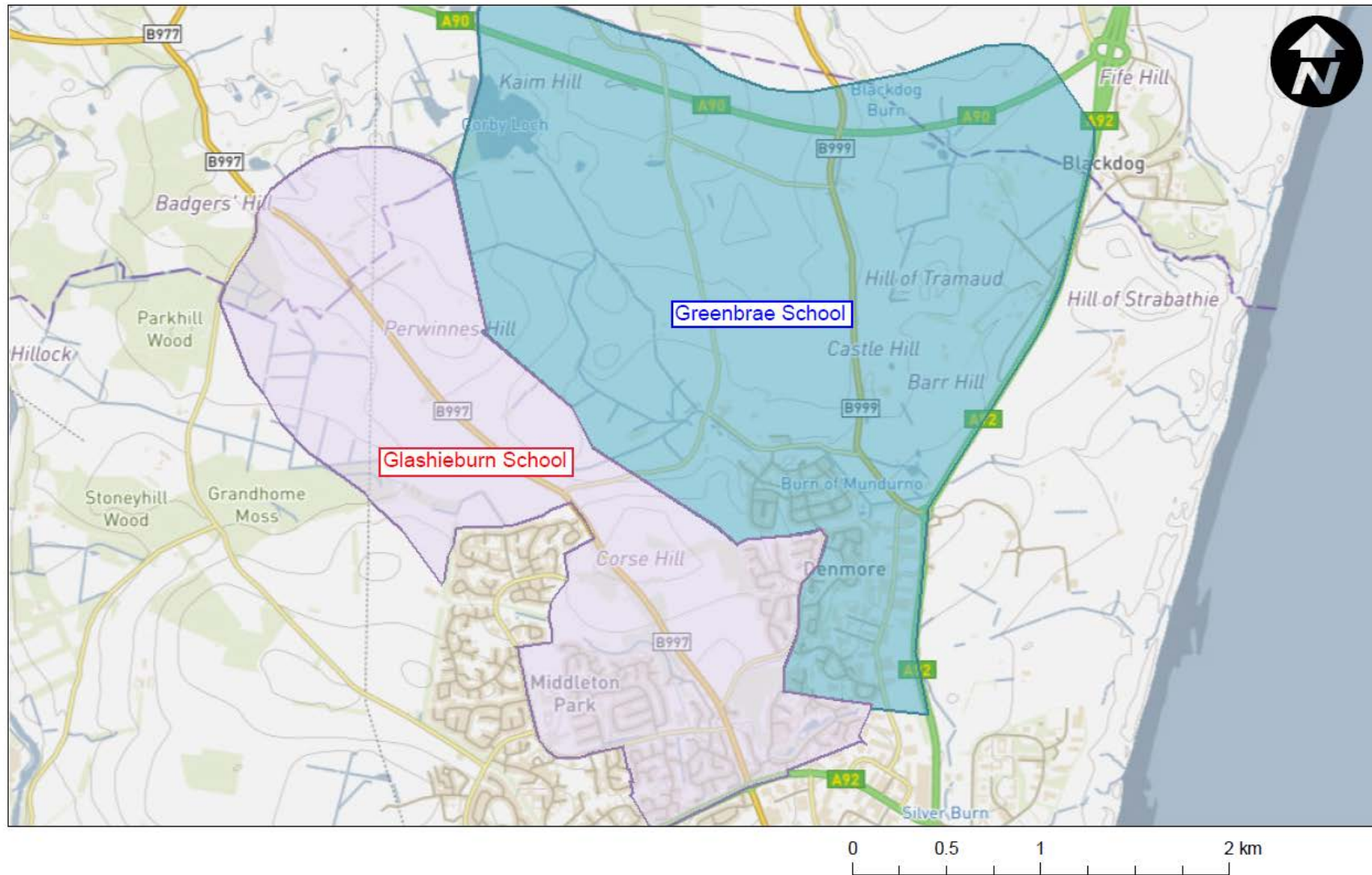
# Appendix 1

Map A: Current catchment areas for Greenbrae School and Glashieburn School



Map B: Proposed catchment areas for Greenbrae School and Glashieburn School

Proposed School Zones



# Map C: Proposed Area to be Rezoned

Area to be rezoned from Greenbrae School to Gashieburn School

