



Proposal Paper

New Hazlehead Academy Campus

And

Alteration of existing secondary school catchment areas for Hazlehead, Countesswells and Kingswells

Statutory Consultation Period

Monday 26 February 2024 to Monday 22nd April 2024

(inclusive)

The school affected by these proposals is:

Hazlehead Academy

Contents

1. Introduction and Summary
2. List of Consultees
3. Background
4. The Proposals
5. The Affected Schools
6. Educational Benefits
7. The Consultation Process
8. Appendix 1 & 2

Please contact us on the telephone number below if you want this document in Braille, large print or on an audio CD, or if you want the document translated into another language.

إذا كنت تود الحصول على هذه الوثيقة بالخط العريض أو البريلا أو الأشرطة الصوتية المدمجة أو كنت تود ترجمتها الى لغة أخرى فالرجاء الاتصال بنا على الهاتف أدناه.

আপনি যদি এই দলিলটি ব্রেইলে, বড় ছাপার অক্ষরে বা শোনার জন্য সিডি, অথবা দলিলটি অন্য কোন ভাষায় অনূদিত চান তবে অনুগ্রহ করে নীচের টেলিফোন নম্বরে ফোন করে আমাদের সাথে যোগাযোগ করুন।

如欲索取此文件的凸字版、大字版、語音光碟，或其他語文翻譯本，請致電下列號碼。

Proszę się skontaktować z nami pod poniższym numerem telefonu jeśli ten dokument jest wymagany w alfabecie Brajla, w dużym druku, na płycie kompaktowej CD lub przetłumaczony na inny język.

Пожалуйста, свяжитесь с нами по номеру телефона, указанному ниже, если Вы хотите получить этот документ шрифтом Брайля, крупным шрифтом или на компактном аудио диске, а также если Вам нужен перевод этого документа на другой язык.



01224 067831

1. INTRODUCTION AND SUMMARY

What is this document about?

- 1.1 This document provides details of a proposal by Aberdeen City Council to build a new secondary school, to replace the existing Hazlehead Academy. The Council is also proposing to make changes to the existing Hazlehead and Countesswells secondary school catchment areas, which also include Kingswells, to create a new catchment area which would be served by the proposed new school.
- 1.2 The new catchment area will show which areas will be served by the new school building. If approved, the catchment area changes would take effect from August 2027, and it is anticipated that the new building would be open at the end of 2027.
- 1.3 Before a decision is taken on whether to go ahead with the proposals, the Council wishes to hear the views of pupils, parents, staff and other stakeholders who may be affected by the changes.
- 1.4 A public consultation has therefore been launched, so that members of the public can give their views about the proposed changes, before a decision is taken on whether they should go ahead.
- 1.5 The public consultation will be open from Monday 26th February 2024 until Monday 22nd April 2024, and views and comments about the proposals can be submitted at any time during this period.
- 1.6 You can submit your views online, using the Council's consultation hub, which can be accessed from <https://consultation.aberdeencity.gov.uk>. You can also send your comments by email, to: schoolestate@aberdeencity.gov.uk
- 1.7 Public consultation meetings will be held on Wednesday 20th March 2024, from 7.00pm to 8.00pm at Kingswells School, Thursday 21st March from 7.00pm to 8.00pm at Countesswells School and Tuesday 26th March from 7.00pm to 8.00pm at Hazlehead Academy. These meetings are open to anyone who wishes to ask questions of Council officers and/or express their views about the proposals.
- 1.8 All of the comments and views received during the consultation period will be summarised and included in a final consultation report, which will be submitted to the Council's Education and Children's Services Committee at its meeting on 2 July 2024. Members of the Committee will consider all of the comments submitted before making a decision on whether the proposals should go ahead.
- 1.9 The full details of the proposals, including maps to show the proposed changes to Hazlehead and Countesswells Secondary School catchment areas, are provided in the sections below.

2. LIST OF CONSULTEES

Who has been asked to comment on these proposals?

Notice of the consultation and a copy of this Proposal Document will be provided to:

- The Parent Councils of Hazlehead Academy, Countesswells and Kingswells Schools
- The parents of the pupils at Hazlehead Academy, Countesswells and Kingswells Schools
- The parents of children expected to attend Hazlehead Academy within 2 years of the date of publication of this Proposal Document (primary schools in Hazlehead ASG)
- The pupils at Hazlehead Academy, Countesswells and Kingswells Schools
- The teaching and support staff at Hazlehead Academy, Countesswells and Kingswells Schools
- The trade union representatives of the above staff
- The Community Councils for the areas affected
- The constituency MSPs
- Regional MSPs for the area
- The Constituency MPs
- Community Planning Partnership Board
- Chief Education Officer, Aberdeen City Council

A copy of this Proposal Document is available on the Aberdeen City Council website at www.aberdeencity.gov.uk/schoolsconsultations.

The document is available in alternative formats, or in translated form for readers whose first language is not English. Please apply to Corporate Landlord, Marischal College, Broad Street, Aberdeen, AB10 1AB, by telephone on 01224 067831; or by e-mail: schoolestate@aberdeencity.gov.uk

3. BACKGROUND

Why are these changes being proposed?

- 3.1 Aberdeen City Council has created a School Estate Plan, which was approved by the Council's Education Operational Delivery Committee in September 2022. This sets out the actions that the Council wishes to take to develop the school estate over the next ten years and beyond.
- 3.2 Aberdeen City Council's vision is for our buildings and grounds to be used to deliver highly effective learning experiences and to support pupil, staff and community wellbeing. Across Aberdeen City, we will make the best use of our facilities to support the learning needs of all. As a result, our facilities will help to ensure each and every learner has the opportunity to attain and achieve a wide range of qualifications and develop the skills for life, learning and work.
- 3.3 We want to make sure that the school estate can provide:
 - sufficient capacity to meet current and future demand for school places;
 - safe, nurturing and inclusive environments for all;
 - stimulating and inspiring learning environments which encourage curiosity and a commitment to lifelong learning;

- flexible and adaptable spaces which can respond to the changing needs of pupils and communities;
 - buildings which are environmentally and economically sustainable;
 - appropriate multi-agency spaces to support close partnership working.
- 3.4 To achieve this vision we need to make some changes to parts of our school estate, and when proposing changes to the way our schools are organised, it is important that we gather the views of the pupils, parents, staff and other stakeholders who may be affected, before a decision is taken on whether to make any changes.
- 3.5 This document sets out a proposal to create a new secondary school, which would also involve some changes to the catchment areas for Countesswells and Kingswells, and it explains how members of the public can share their views about the proposals.

4. THE PROPOSALS

What are the proposed changes?

Aberdeen City Council is proposing:

To merge the existing secondary school catchment areas for Hazlehead, Countesswells and Kingswells, to form a new catchment area to be served by the planned replacement building for Hazlehead Academy

- 4.1 The Council is proposing to build a new secondary school, to replace the existing Hazlehead Academy building and to serve the communities of Hazlehead, Countesswells and Kingswells. The new provision will deliver a 21st century low carbon school to deliver highly effective learning experiences, and will support pupil, staff and community wellbeing within and out with school hours.
- 4.2 Pupils living in the new Countesswells housing development currently access secondary education at Hazlehead Academy. This was intended to be a temporary measure in advance of a new secondary school being constructed within the Countesswells development. A separate secondary school catchment area was created for Countesswells in 2016, in anticipation of a new school opening there. Due to current house numbers and future anticipated build rates, the number of current and forecasted pupils expected to be living in Countesswells is not sufficient to sustain a new separate secondary school for Countesswells at this time. There are currently approximately 50 pupils attending Hazlehead Academy who live at Countesswells.
- 4.3 Given that the construction of a new secondary school at Countesswells is not currently viable, the Council is instead proposing that additional capacity is included in the proposed replacement Hazlehead Academy building, and that Countesswells is included in a new catchment area for the new school, so that children living in Countesswells can be accommodated within that building.
- 4.4 In March 2016, a decision was taken by the Council to include Kingswells within the new catchment area of the proposed secondary school for Countesswells. As a temporary measure, it was also agreed that children living in Kingswells would continue to be entitled to attend Bucksburn Academy, until the new school at Countesswells opened.

- 4.5 Given that it is not currently viable to build a new school at Countesswells, the Council is now proposing that sufficient capacity should be included in the proposed replacement Hazlehead Academy building, and that Kingswells should also be included in the catchment area for the school, so that children living in Kingswells can be accommodated within that building.
- 4.6 If the proposals are accepted, this would mean that following the opening of the new building, children living in Countesswells and Kingswells, and also all children living within the existing Hazlehead Academy catchment area, would be entitled to attend Hazlehead Academy when reaching secondary school age.
- 4.7 If the proposals are accepted, children living in Kingswells in the future would no longer be entitled to a place at Bucksburn Academy, although any children living in Kingswells who are already attending Bucksburn Academy when the changes are implemented, would have the option to remain at Bucksburn Academy until they leave secondary school. Similarly, any child living in Kingswells who reaches secondary school age after the changes take effect, and who at that time has an older sibling who attends Bucksburn Academy, would have the option of also attending Bucksburn Academy, to help keep family groups together.
- 4.8 The new school would provide capacity for 1600 pupils, and would be constructed on the current playing fields adjacent to the existing school. Building a new school for these communities presents an opportunity to adopt the latest design standards to support high quality learning and teaching, whilst also recognising the central role which schools and learning play in the life of a community. The new school building would support reduced energy consumption and lower carbon emissions which will help meet the Council's net zero targets.

Additional key features include:

- A building that is adaptable and flexible, linking the indoors to the outdoors
 - A facility that is digitally connected and enabled with high speed digital infrastructure
 - A suitable environment for building users to support health, wellbeing and learning
 - A focal point for the community, which supports health and wellbeing
- 4.5 The new building would ensure that pupils living in Hazlehead, Kingswells and Countesswells can continue to attend school with peers from their community. The building would have sustainable and viable pupil rolls which would support the delivery of the full breadth of the curriculum.
- 4.6 An indicative concept design of the new school building is provided at Appendix 1. Exact positioning and layouts will be further developed as the project progresses, and there will be further opportunities for pupils and parents to contribute to and provide feedback on the design of the new school, as the project moves into the next stages. It is anticipated that construction of the new building would be completed by late 2027.
- 4.7 The proposed changes to the current catchment areas are illustrated in Maps A and B at Appendix 2 below. If the proposed changes are approved, it is anticipated that they would be implemented from 1st August 2027.

5. IMPACT ON HAZLEHEAD ACADEMY

How would the changes affect Hazlehead Academy?

- 5.1 The table below shows the estimated numbers of pupils expected to be attending Hazlehead Academy in the future, based on the most recently available data on pupil numbers and housing forecasts. These figures include the numbers of pupils expected to be living within the Countesswells development over the next six years. The current maximum pupil capacity of Hazlehead Academy is **1,127**

Year	2023 (actual)	2024	2025	2026	2027	2028	2029
<i>Pupil Numbers (from existing catchment area including Countesswells)</i>	1074	1029	1031	1069	1159	1243	1345

- 5.2 The table shows that, by 2027, the number of pupils expected to be attending Hazlehead Academy will exceed the school's available capacity, and will continue to grow each year. This is mainly because the current arrangement is for pupils living in the Countesswells development to attend Hazlehead Academy, and so the number of pupils expected to be generated by the development have been included in the forecast for the school. There is, therefore, a requirement for additional secondary school capacity to be created, and an opportunity to rethink how high-quality secondary education provision for these communities could be provided more efficiently, that will be flexible in meeting the future needs of the communities.
- 5.3 As shown in the maps at Appendix 2 below, it is proposed that the Hazlehead Academy catchment area is changed, so that Countesswells and Kingswells are included within it. The table below shows the forecast numbers of pupils who would be attending the school, if these proposed changes are approved:

Year	2023 (actual)	2024	2025	2026	2027	2028	2029
<i>Pupil Numbers (proposed new catchment area including Countesswells and Kingswells)</i>	1074	1029	1031	1069	1218	1361	1525

- 5.4 The table shows that, based on current school roll and housing forecasts, the planned new school building, with a capacity for 1600 pupils, would be sufficient to accommodate pupils from all three communities of Hazlehead, Countesswells and Kingswells, until at least 2029.
- 5.5 During the construction phase of the new school building, Hazlehead Academy will continue to operate and deliver the full curriculum to all pupils. Appropriate measures and communication will be put in place to ensure any disruption is kept to a minimum and the health and safety of all pupils and staff is maintained, with alternative facilities being made available whilst the playing fields are being built on.

6. EDUCATIONAL BENEFITS

How would the proposed changes benefit pupils?

- 6.1 The above proposals would realise the following educational benefits for the affected pupils:
- The proposals would assist in reducing forecast capacity pressures within Hazlehead Academy and allow for sustainable growth within the proposed new catchment area.
 - Sustainable rolls ensure that effective teacher staffing levels are maintained which would support an increased curriculum offer.
 - Pupils, staff and the communities of Hazlehead, Countesswells and Kingswells would benefit from a modern purpose-built school for secondary education and lifelong learning. A new build school would offer a range of flexible spaces in which practitioners could plan for and deliver a wide and flexible range of learning opportunities, including outdoor learning and physical activity which has well documented benefits to both learning outcomes and the wellbeing of young people.
 - The new school would provide an optimum learning environment for all young people while the high quality facilities within the building would enable the school to make use of a variety of spaces and approaches to support pupils who require a greater level of personalisation to meet their additional support needs.
 - A digitally enabled building and access to improved technology will creatively deliver facilities, services and opportunities for pupils, staff and the wider community that are accessible beyond the standard day
 - The new school will help to enhance and maximise the delivery of Gaelic Medium Education provision, and existing partnership opportunities, for example with the Scottish Football Association.
 - The proposed changes to school catchment areas would provide clarity on the future arrangements for secondary school enrolment for pupils in Countesswells and Kingswells, which would help remove any anxiety for parents and pupils in securing a school placement and therefore support the health and wellbeing of children and families.

7. THE CONSULTATION PROCESS

How will the consultation work and how can I submit my views?

The Proposal Paper

- 7.1 A copy of this proposal paper and other information about this consultation can be accessed from: www.aberdeencity.gov.uk/schoolsconsultations
- 7.2 A copy of this document will also be available for public viewing during the period of consultation in the following buildings:

Marischal College
Central Library

Hazlehead Academy
Kingswells School
Countesswells School
Airyhall Library

Public Meetings

7.3 Three public meetings to discuss the proposals will take place on:

Wednesday 20th March from 7.00pm to 8.00pm at Kingswells School
Thursday 21st March from 7.00pm to 8.00pm at Countesswells School
Tuesday 26th March from 7.00pm to 8.00pm at Hazlehead Academy

Three meetings have been arranged to provide a choice of dates and venues; the same information will be shared at each meeting.

Submitting Your Views

7.4 Any members of the public can respond to the consultation online, using the Council's Consultation Hub: <https://consultation.aberdeencity.gov.uk/>

Alternatively, comments can be submitted by sending an email to:

schoolestate@aberdeencity.gov.uk

Or by writing to:

Hazlehead Academy Consultation, Resources, Corporate Landlord, Aberdeen City Council,
Business Hub 10, Second Floor South, Marischal College, Broad Street, ABERDEEN AB10
1AB

All responses must be submitted by Monday 22 April 2024.

Reporting the Outcome of the Consultation

7.5 A summary of all comments received during the consultation will be published on the Council's website at www.aberdeencity.gov.uk/schoolsconsultations

7.6 A report on the consultation will be presented to the Education and Children's Services Committee at its meeting on 2 July 2024. This will provide information to enable Members to make a final decision on the proposals.

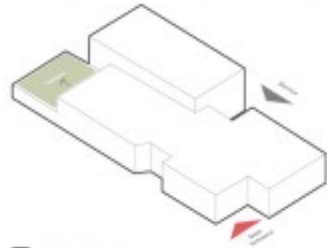
Appendix 1

Option B - Newbuild 1600 Pupil Option at Current Hazlehead Site Indicative Site Plan

The creation of a new build 1,600 pupil secondary school to the north west of the existing building. This option will accommodate pupils from Hazlehead, Countesswells and Kingswells.

Through the positioning of the school, this option avoids the need for decant, with the new school being built on the current site playing fields, followed by the demolition of the existing Hazlehead Academy buildings.

The site layout benefits from a variety of south facing outdoor spaces, as well as grass and 3G pitches.

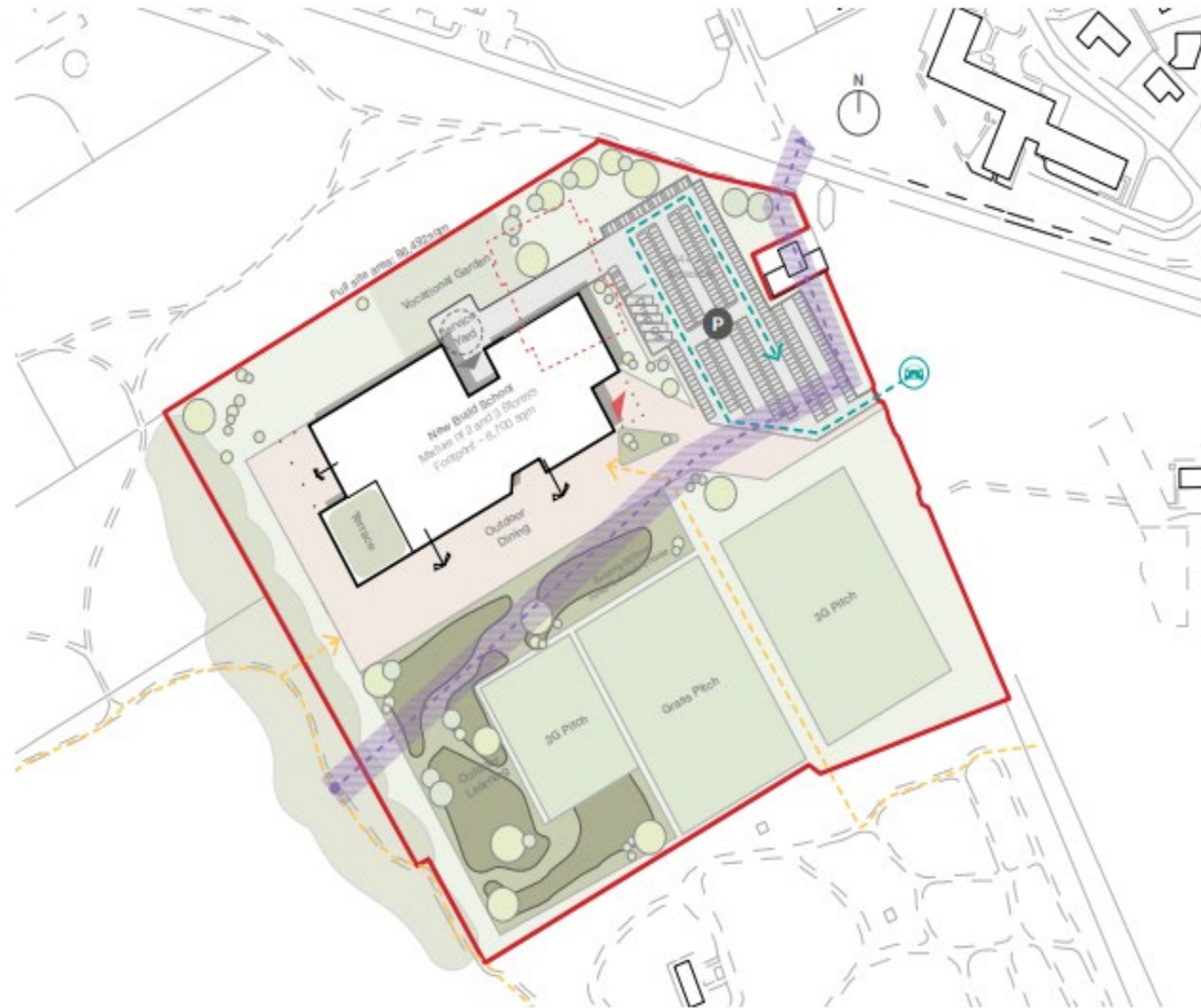


1,600
design pupil roll

16,000
SFT target metric area

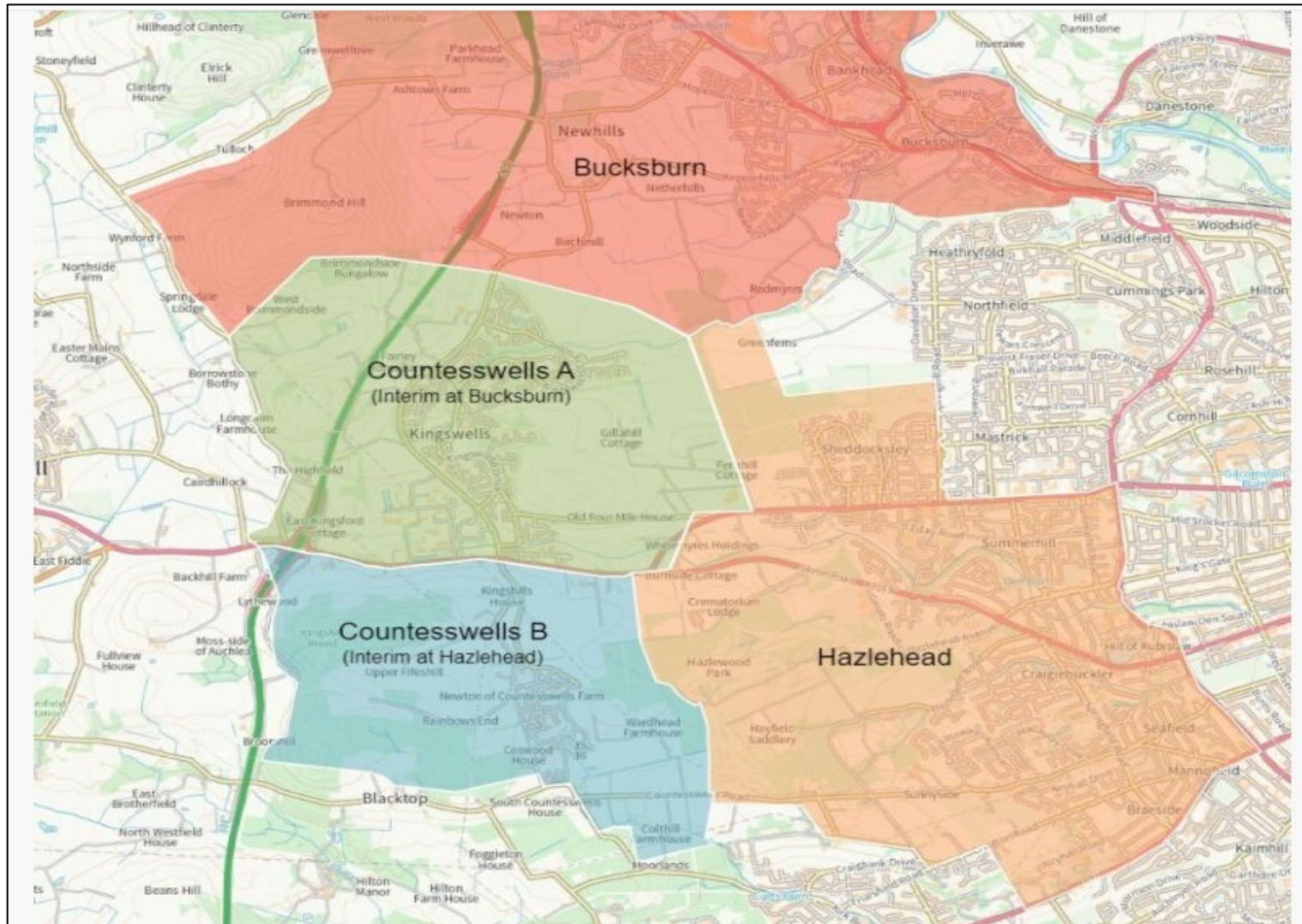
TOTAL SITE AREA	86,492sqm
SPA* SITE TARGET	30,351sqm
SPA* PLAYING FIELDS TARGET	44,515sqm
BB103 TARGET SITE	82,000sqm
BUILDING FOOTPRINT	8,700sqm
TOTAL BUILDING GIFA	16,000sqm
SFT METRIC TARGET AREA	16,000sqm

*SPA - School Premises Act



Appendix 2

Map A: Current Catchment Areas



Map B: Proposed Catchment Areas

