

A947 Multi-Modal Corridor Study - Detailed Appraisal

The Council has commissioned AECOM to further consider options to improve transport connections for users of the A947 corridor between the Aberdeen Western Peripheral Route and the A96. The study, which is being funded by Nestrans, is being taken forward in accordance with Scottish Transport Appraisal Guidance (STAG) and builds on initial work completed in 2022 to identify and appraise options to improve active travel and public transport opportunities along this corridor.



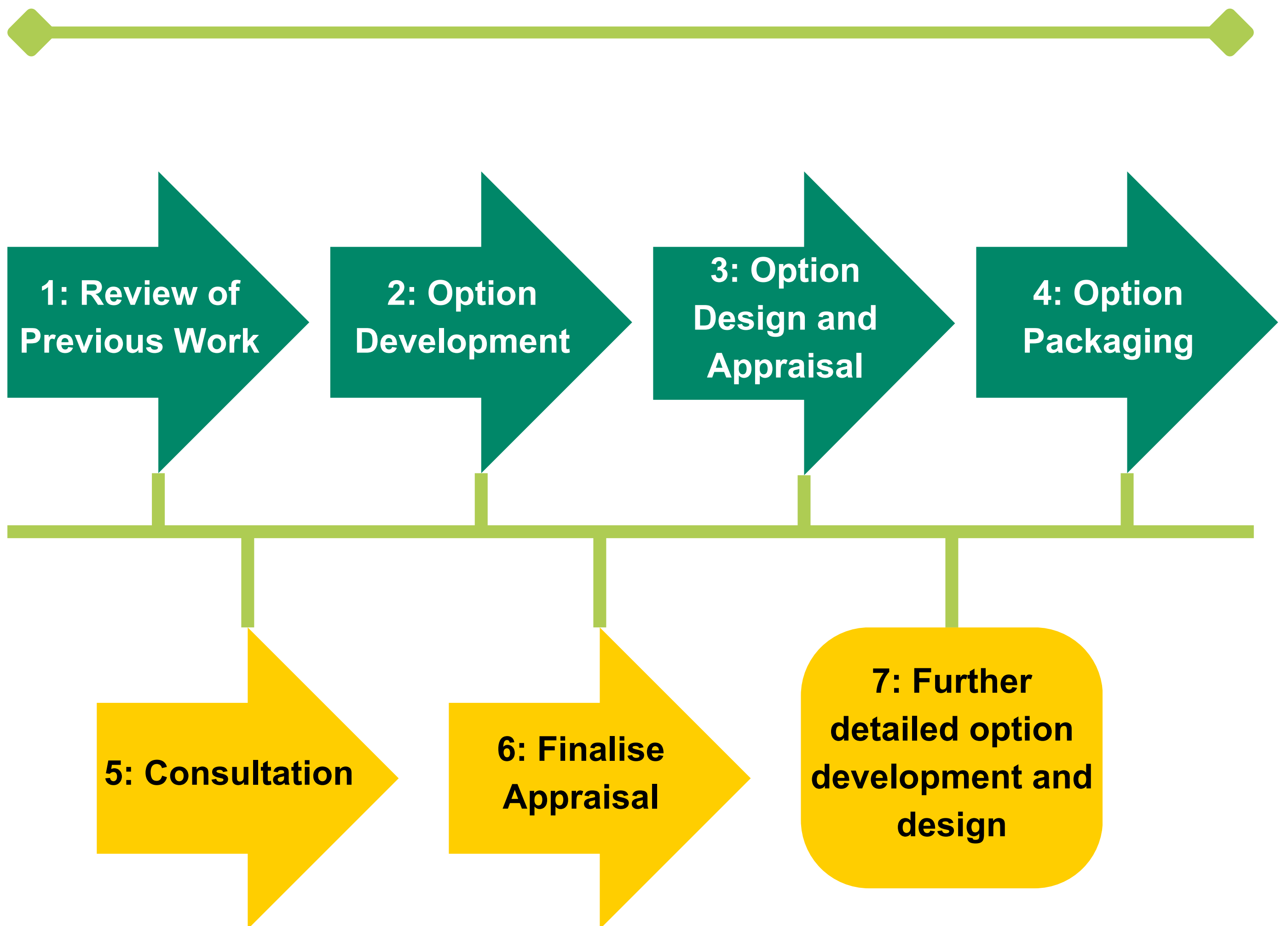
The Story So Far...

The previous stage of the study identified key problems, issues, constraints and opportunities on the corridor; developed study objectives; generated a long list of options; and undertook preliminary option appraisal.

Problems	Limited and poor quality active travel infrastructure, lack of signage, Formartine & Buchan Way poorly maintained with inaccessible gates. Evidence of dangerous vehicle driving.
Opportunities	Short distances to work encourages active travel, increased funding for active travel interventions and locking in benefits of AWPR.
Issues	Change in future travel patterns following COVID-19 pandemic, increasing impact of climate change, technology advances and high car use.
Constraints	Funding availability and various environmental constraints.



The Current Study



Study Objective 1: Increase the number of walking and wheeling trips in the study area by 20% within 5 years of project delivery (against a 2024 baseline)

Study Objective 2: Increase the number of cycling trips in the study area by 20% within 5 years of project delivery (against a 2024 baseline)

Option Progression

Following on from the first stage of the study in 2022, a number of options have been brought forward for further, more detailed, appraisal and design work.

These options have now been grouped together to create option packages. These packages represent combinations of options in different parts of the study area and various types of intervention. They are not mutually exclusive and the final list of measures for further development and design may include measures from across the different packages. Some options within the packages themselves offer alternative solutions in similar locations.

We are seeking feedback as part of this consultation on the options within the five packages. This will allow us to finalise a package of measures for the corridor that will be subject to further development and design work.

A947 (West) Package

**Riverview Drive
Package**

Victoria Street Package

**Targeted Local
Improvements Package**

**Strategic Corridor
Improvements Package**

Other Options Being Progressed

The Council is also now progressing a number of other options in parallel to the packages we are looking for feedback on as part of this consultation. These options - which do not require further detailed appraisal - form part of our overall transport strategy for the A947 corridor and are starting to deliver on what people told us they wanted to see on the study corridor during the previous stage of the study. Work is now underway to understand how these options would look 'on the ground', and we hope to bring these forward on a prioritised basis, as funding allows.

Implement measures to give active travel users priority over Burnside Drive when using the shared use path on Riverview Drive

Provide a formal pedestrian crossing point to the north of the A947/Riverview Drive Roundabout to facilitate movements to the Formartine and Buchan Way

Provide a formal pedestrian crossing point to the east of the A947/Riverview Drive Roundabout

Implement formal pedestrian crossing facilities on the arms of the Riverview Drive/Stoneywood Road Roundabout

Implement signalised crossing facility on Victoria Street adjacent to Tesco

Conduct a footway review throughout the study area, identifying gaps in provision and considering the width and surfacing of existing footways

Provide direct active travel link between Dyce Drive and Riverview Drive

Implement footways on the south side of the carriageway on Pitmedden Road

Provide continuous footways on Riverview Drive for the duration of the route

Other Options Being Progressed



Conduct a review of wayfinding signage throughout the study area

Undertake a review of parking arrangements on Victoria Street

Introduce placemaking and gateway features on Victoria Street

Review the layout of Victoria Street / Pitmedden Road for pedestrians

Implement a bike hire scheme within Dyce

Upgrade the Riverside Path to a high quality active travel route, including improvements to the surfacing of the route and implementation of lighting

Implement real time passenger information at key bus stops along the study corridor

Implement electric vehicle charging points at key locations within Dyce

We are also progressing a number of other interventions in the A947 study area including reviewing signage, providing cycle parking, implementing dropped kerbs and further promoting transport facilities in the area, including Craibstone Park and Ride. These measures complement our overall strategy for transport in the area.

Our Transport Strategy for the A947 Corridor

Option Packages

- A947 (West) Package
- Riverview Drive Package
- Victoria Street Package
- Strategic Corridor and Targeted Local Improvements Packages

A947 Consultation Options

- Junction Layout Review
- Crossing Improvements
- Shared Use Footway
- Two-Way Segregated Cycle Track
- With-Flow Segregated Cycle Track
- Mixed Traffic Street
- Other Options Progressing by ACC
- Other Options Progressing by ACC

© OpenStreetMap Contributors



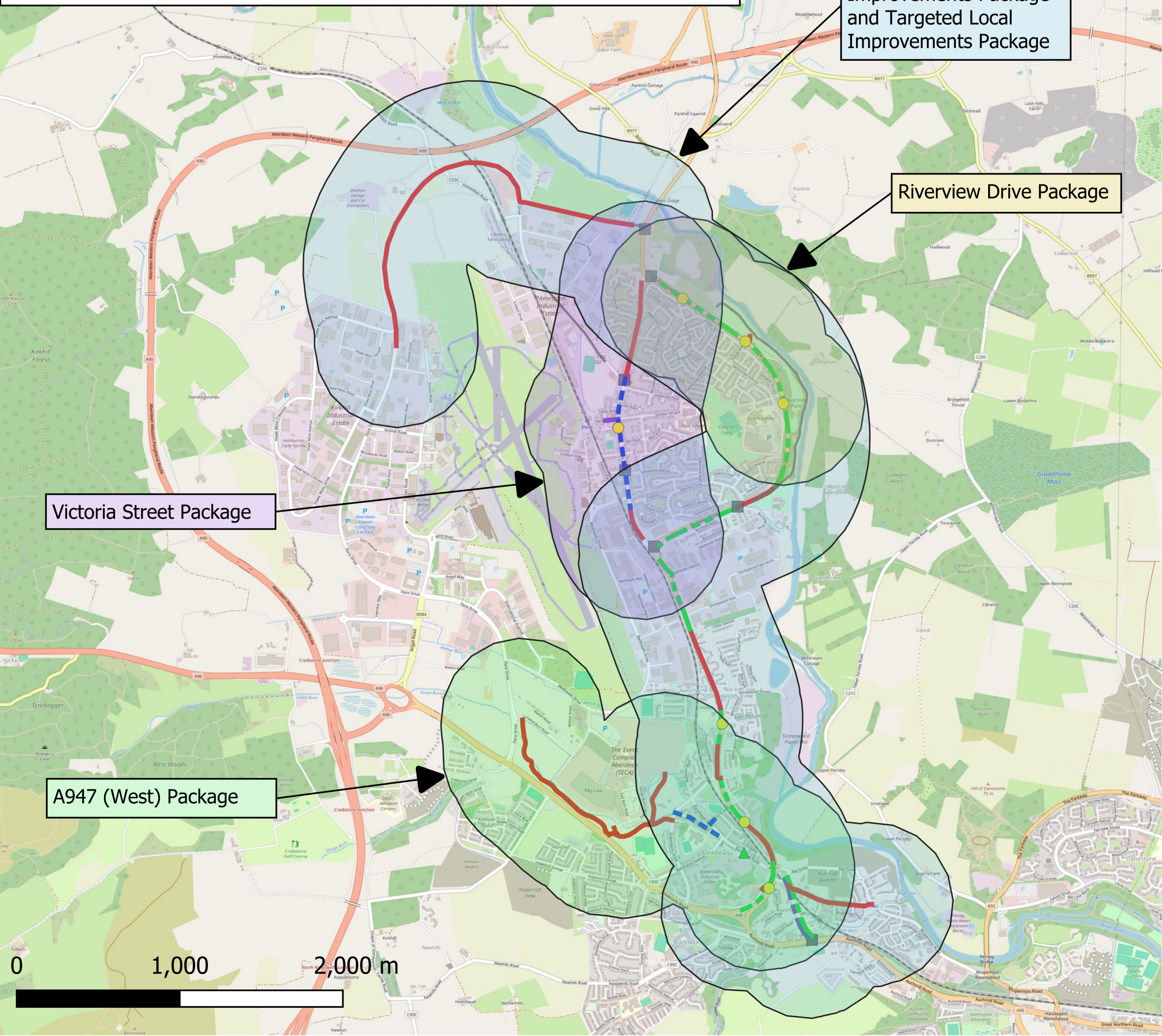
SOME OPTIONS HAVE MORE DETAILED PLANS AVAILABLE TO VIEW ON THE MAIN CONSULTATION PAGE

Strategic Corridor Improvements Package and Targeted Local Improvements Package

Riverview Drive Package

Victoria Street Package

A947 (West) Package



Options For Feedback

This section of the consultation outlines in more detail the packages of options we are seeking feedback on. We will use your feedback to help us confirm which options move forward to the next stage along with the options being progressed separately by the Council, as described above.

This consultation is on those options within the Aberdeen City Council boundary. Options that extend into Aberdeenshire have been passed to Aberdeenshire Council for consideration.



A947 (West) Package

The options in this package focus on improvements to facilitate journeys in the western sections of the A947 corridor study area.

Introduce wayfinding signage and resurface and widen the existing core path network at The Event Complex Aberdeen (TECA)

Implement improvements to develop a mixed traffic street (which allows for safe, on-road cycling) on the local road network to the west of the A947, incorporating Bankhead Road, Greenburn Road and Millhill Brae

Widen the existing shared use footway to the west of the A947 near the retail park at Bucksburn Roundabout

Implement a two-way segregated cycle track to the west of the A947 near the retail park at Bucksburn Roundabout

Review layout of the A947/McDonalds access road junction

Key Points:

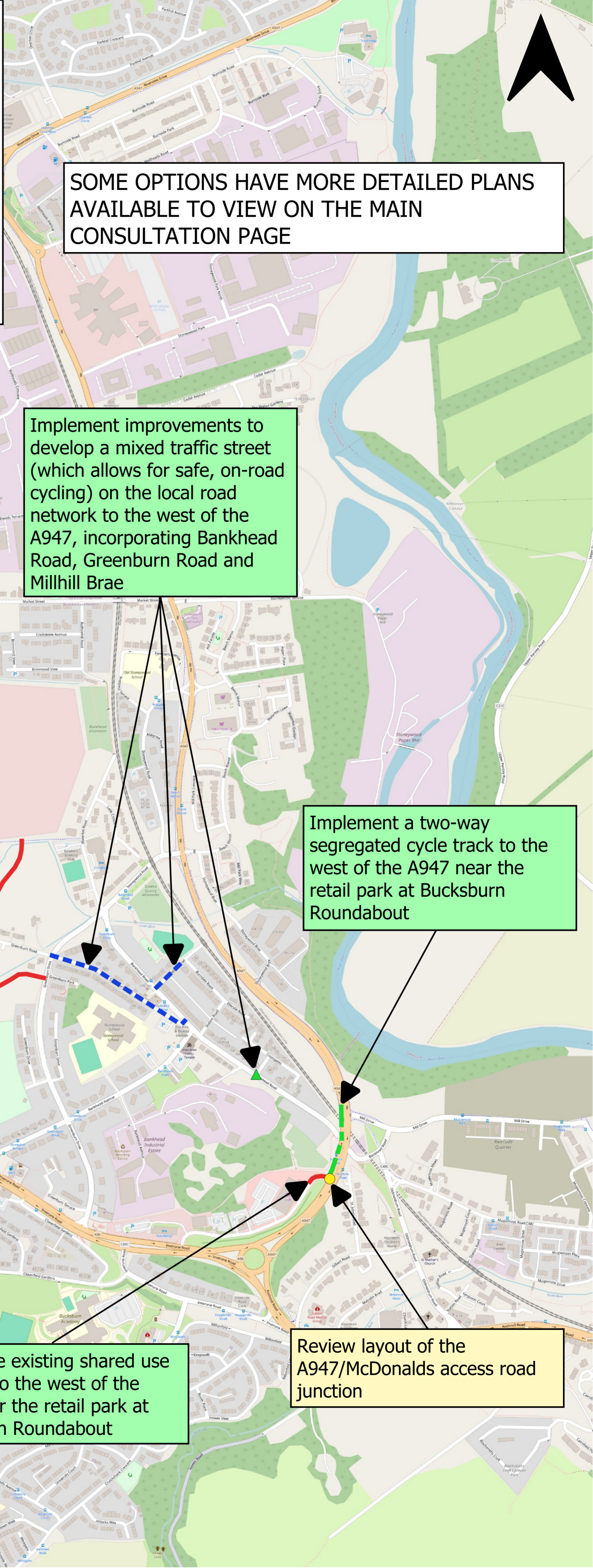
- **Provides improved active travel opportunities in the west of the A947 corridor study area**
- **Supports promotion of physical and mental health benefits**
- **Implementation of active travel ‘Quiet Routes’ on Millhill Brae and Greenburn Road can be preferable to less experienced cyclists and underrepresented groups**
- **Enhances safety of active travel trips, including journeys to Stoneywood School**
- **Improves active travel access to shops and services at the Bucksburn retail park**
- **Geographical extent of this package limits its overall impact, however localised benefits would be provided to the west of the A947 in this package**
- **At the next stage, further work will be undertaken to understand any technical risks associated with the options and the costs associated with implementing them**

A947 (West) Package

A947 Consultation Options

- Junction Layout Review
- ▲ Crossing Improvements
- Shared Use Footway
- Two-Way Segregated Cycle Track
- Mixed Traffic Street

© OpenStreetMap Contributors



SOME OPTIONS HAVE MORE DETAILED PLANS AVAILABLE TO VIEW ON THE MAIN CONSULTATION PAGE

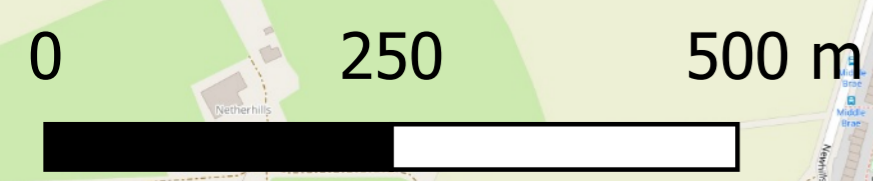
Introduce wayfinding signage and resurface and widen the existing core path network at The Event Complex Aberdeen (TECA)

Implement improvements to develop a mixed traffic street (which allows for safe, on-road cycling) on the local road network to the west of the A947, incorporating Bankhead Road, Greenburn Road and Millhill Brae

Implement a two-way segregated cycle track to the west of the A947 near the retail park at Bucksburn Roundabout

Widen the existing shared use footway to the west of the A947 near the retail park at Bucksburn Roundabout

Review layout of the A947/McDonalds access road junction



Riverview Drive Package

The options in this package focus on improvements to facilitate journeys along Riverview Drive.

Implement a new footpath to connect the Riverside Path and housing in Dyce at Todlaw Walk junction

Increase the kerb radii at the Riverview Drive/Balloch Way Junction to improve pedestrian accessibility

Increase the kerb radii at the Riverview Drive/Todlaw Walk Junction to improve pedestrian accessibility

Increase the kerb radii at the Riverview Drive/Netherview Avenue Junction to improve pedestrian accessibility

Key Points:

- **Improves walking, wheeling and cycling opportunities between residential areas of Dyce and the Riverside Path**
- **Improves safety for those travelling along Riverview Drive and accessing residential areas and key destinations, including Dyce Academy**
- **Supports promotion of physical and mental health benefits including improved access to recreational assets such as the Riverside Path**
- **Geographical extent of this package limits its overall impact, however localised benefits would be provided along Riverview Drive in this package**
- **Junction improvements in isolation have limited impact in the absence of additional infrastructure measures within the package, but will support improved pedestrian accessibility**
- **At the next stage, further work will be undertaken to understand any technical risks associated with the options and the costs associated with implementing them**

Riverview Drive Package

A947 Consultation Options

- Junction Layout Review
 - Shared Use Footway
 - Other Options Progressing by ACC
 - Other Options Progressing by ACC
- © OpenStreetMap Contributors

SOME OPTIONS HAVE MORE DETAILED PLANS AVAILABLE TO VIEW ON THE MAIN CONSULTATION PAGE

Provide a formal pedestrian crossing point to the east of the A947/Riverview Drive Roundabout

Implement a new footpath to connect the Riverside Path and housing in Dyce at Todlaw Walk junction

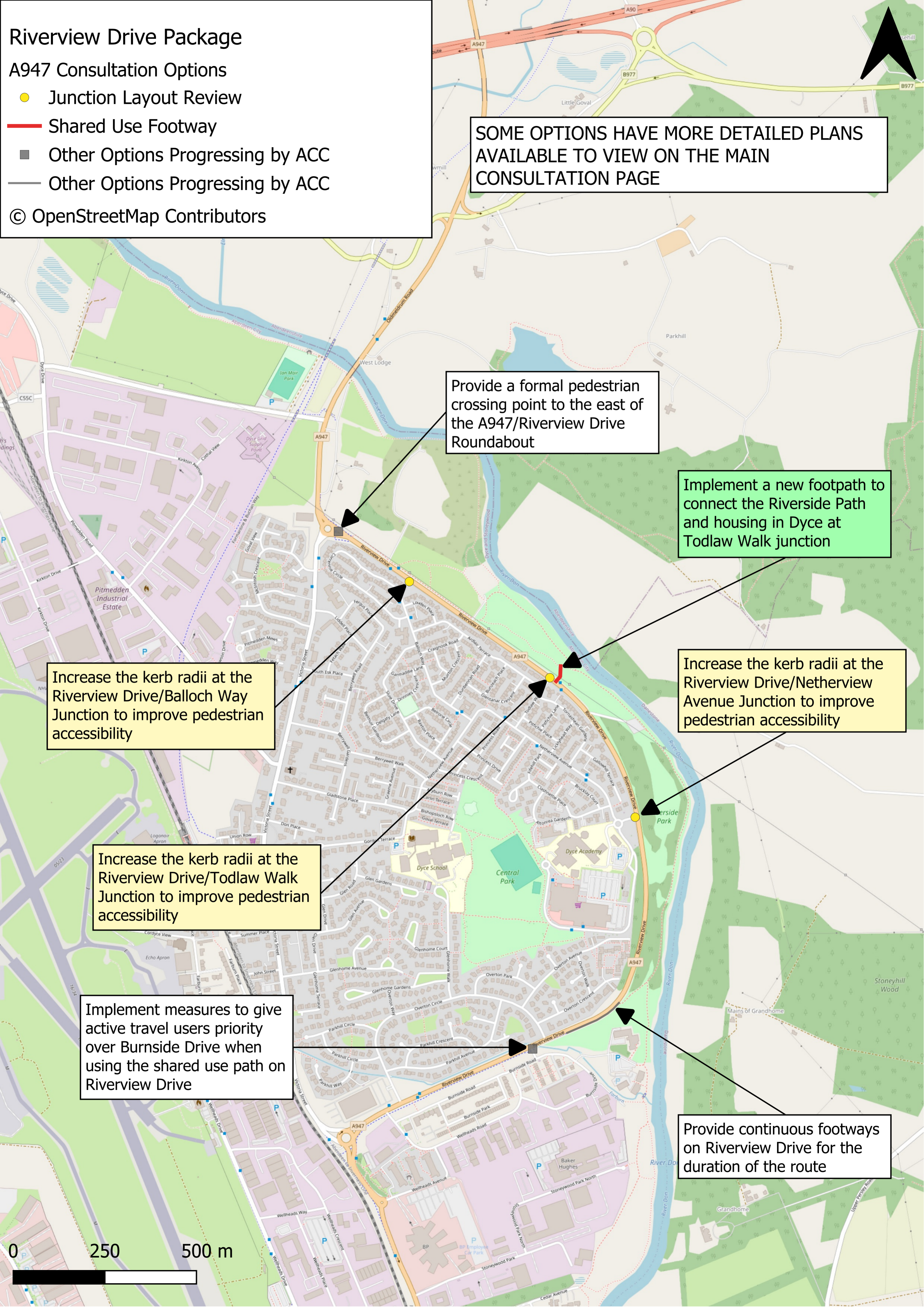
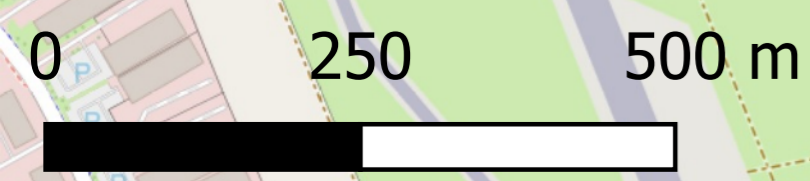
Increase the kerb radii at the Riverview Drive/Balloch Way Junction to improve pedestrian accessibility

Increase the kerb radii at the Riverview Drive/Netherview Avenue Junction to improve pedestrian accessibility

Increase the kerb radii at the Riverview Drive/Todlaw Walk Junction to improve pedestrian accessibility

Implement measures to give active travel users priority over Burnside Drive when using the shared use path on Riverview Drive

Provide continuous footways on Riverview Drive for the duration of the route



Victoria Street Package

The options in this package focus on improvements to facilitate journeys in and around the Victoria Street area, in the centre of the study area.

Implement a contra-flow cycle lane along Station Road to improve active travel connectivity with Dyce Rail Station

Implement shared use footways and mixed traffic street measures on Victoria Street

Implement a one-way system along Station Road and the adjacent streets

Implement access only restrictions for general traffic on Victoria Street

Implement one-way restrictions for general traffic on Victoria Street

Key Points:

- Promotes the Victoria Street area as a place for people
- Supports the vitality of Dyce centre - package would contribute to enhanced sense of place and may assist in stimulating development locally
- Provides direct linkage between residential areas in the centre of Dyce and employment and training opportunities
- Potential reduction in vehicle emissions in the area would have positive impacts on health and wellbeing
- Enhances safety of active travel trips
- Some elements of the package could have negative impacts on those with mobility issues
- At the next stage, further work will be undertaken to understand any technical risks associated with the options and the costs associated with implementing them

Victoria Street Package

A947 Consultation Options

- Junction Layout Review
- Shared Use Footway
- - With-Flow Segregated Cycle Track
- - - Mixed Traffic Street
- Other Options Progressing by ACC

© OpenStreetMap Contributors

Other A947 Consultation Options

- Implement access only restrictions for general traffic on Victoria Street
- Implement one-way restrictions for general traffic on Victoria Street

Other Options Progressing by ACC (Not Mapped)

- Undertake a review of parking arrangements on Victoria Street
- Introduce placemaking and gateway features on Victoria Street

SOME OPTIONS HAVE MORE DETAILED PLANS AVAILABLE TO VIEW ON THE MAIN CONSULTATION PAGE

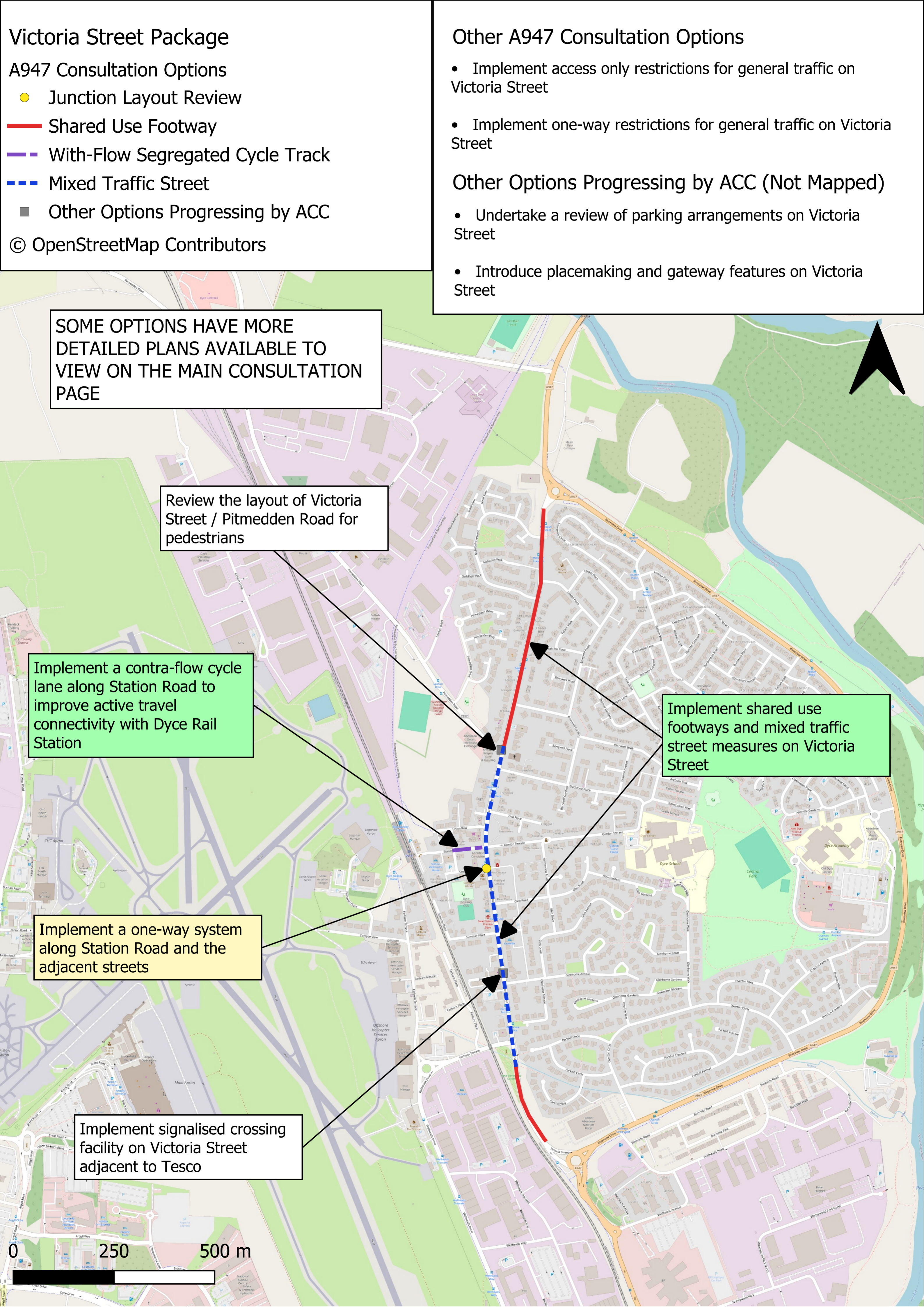
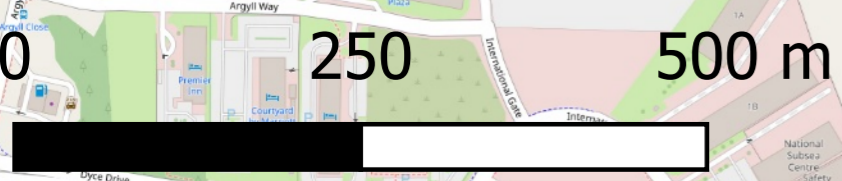
Review the layout of Victoria Street / Pitmedden Road for pedestrians

Implement a contra-flow cycle lane along Station Road to improve active travel connectivity with Dyce Rail Station

Implement shared use footways and mixed traffic street measures on Victoria Street

Implement a one-way system along Station Road and the adjacent streets

Implement signalled crossing facility on Victoria Street adjacent to Tesco



Targeted Local Improvements Package



The options in this package provide targeted local improvements at locations across the A947 corridor study area.

Implement with-flow segregated cycleway on Old Meldrum Road

Implement two-way segregated cycleway on Old Meldrum Road

Implement widened footways along Mugiemooss Road

Implement a splitter island at the A947/Stoneywood Road Junction at Co-Op/Marks and Spencer to prevent illegal turning manoeuvres

Increase the existing taper at the A947/Stoneywood Brae Junction to reduce vehicle speeds

Key Points:

- **Measures provide focussed improvements to support the safe movement of users in parts of the A947 corridor study area**
- **Supports promotion of physical and mental health benefits**
- **Options for Old Meldrum Road would complement wider work progressing to deliver active travel improvements on the A96 corridor**
- **Geographical extent of this package limits its overall impact - but the measures proposed would provide targeted improvements to benefit local areas**
- **At the next stage, further work will be undertaken to understand any technical risks associated with the options and the costs associated with implementing them**

Targeted Local Improvements Package

A947 Consultation Options

- Junction Layout Review
- Shared Use Footway
- Two-Way Segregated Cycle Track
- With-Flow Segregated Cycle Track
- Other Options Progressing by ACC
- Other Options Progressing by ACC

© OpenStreetMap Contributors

SOME OPTIONS HAVE MORE DETAILED PLANS AVAILABLE TO VIEW ON THE MAIN CONSULTATION PAGE

Implement footways on the south side of the carriageway on Pitmedden Road

Upgrade the Riverside Path to a high quality active travel route, including improvements to the surfacing of the route and implementation of lighting

Increase the existing taper at the A947/Stoneywood Brae Junction to reduce vehicle speeds

Implement with-flow or two-way segregated cycleway on Old Meldrum Road

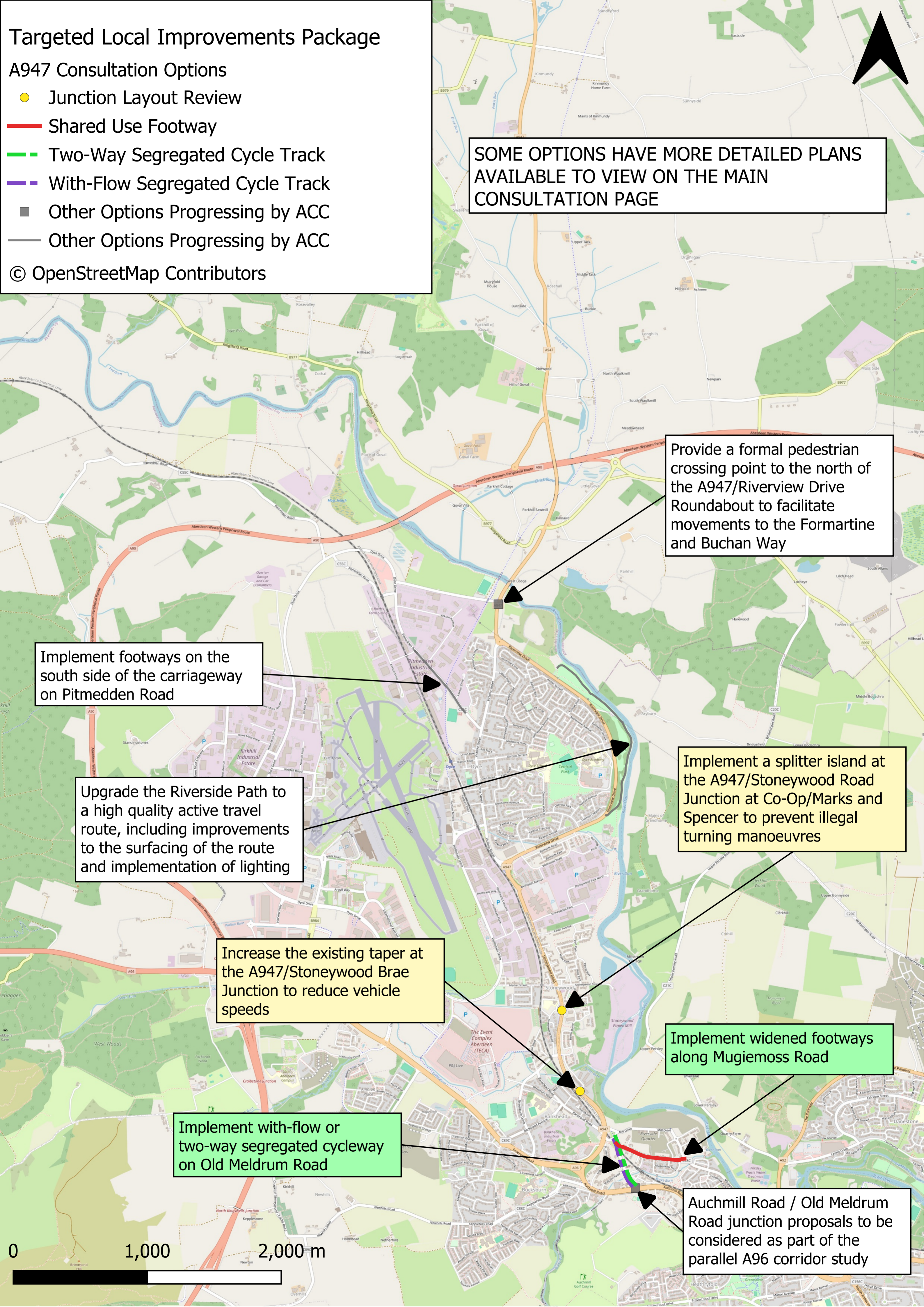
Provide a formal pedestrian crossing point to the north of the A947/Riverview Drive Roundabout to facilitate movements to the Formartine and Buchan Way

Implement a splitter island at the A947/Stoneywood Road Junction at Co-Op/Marks and Spencer to prevent illegal turning manoeuvres

Implement widened footways along Mugiemoor Road

Auchmill Road / Old Meldrum Road junction proposals to be considered as part of the parallel A96 corridor study

0 1,000 2,000 m



Strategic Corridor Improvements Package



The options in this package focus on providing strategic interventions across the A947 corridor study area, including for both active travel and public transport.

Implement new shared use and segregated cycle track facilities on the A947 between the Bucksburn Roundabout and Riverview Drive Roundabout North

Implement shared use footway on Dyce Drive between the A947 and Kirkhill Industrial Estate to the north of Aberdeen International Airport

Conduct a traffic signal review to consider bus priority at all traffic signals along the A947 corridor

Implement package of measures to support implementation of a 20-minute neighbourhood in Dyce

Key Points:

- **Package has the potential to deliver significant benefit to those travelling by sustainable modes of transport across the A947 corridor study area**
- **Enhances safety of active travel trips - a reduced speed limit and priority pedestrian crossings on the section of Dyce Drive between Pitmedden Road and Kirkhill Industrial Estate form part of the proposal**
- **Would satisfy a gap in the network in the north of the study area**
- **Would support improved access by walking, wheeling and cycling to key employment areas within Dyce**
- **At the next stage, further work will be undertaken to understand any technical risks associated with the options and the costs associated with implementing them**

Strategic Corridor Improvements Package

A947 Consultation Options

- Shared Use Footway
- Two-Way Segregated Cycle Track
- Other Options Progressing by ACC
- Other Options Progressing by ACC

© OpenStreetMap Contributors

Other A947 Consultation Options

- Conduct a traffic signal review to consider bus priority at all traffic signals along the A947 corridor
- Implement package of measures to support implementation of a 20-minute neighbourhood in Dyce

Other Options Progressing by ACC (Not Mapped)

- Implement outcomes of footway review undertaken throughout the study area
- Implement outcomes of wayfinding signage review undertaken throughout the study area
- Implement real time passenger information at key bus stops along the study corridor

SOME OPTIONS HAVE MORE DETAILED PLANS AVAILABLE TO VIEW ON THE MAIN CONSULTATION PAGE

Implement shared use footway on Dyce Drive between the A947 and Kirkhill Industrial Estate to the north of Aberdeen International Airport

Provide direct active travel link between Dyce Drive and Riverview Drive

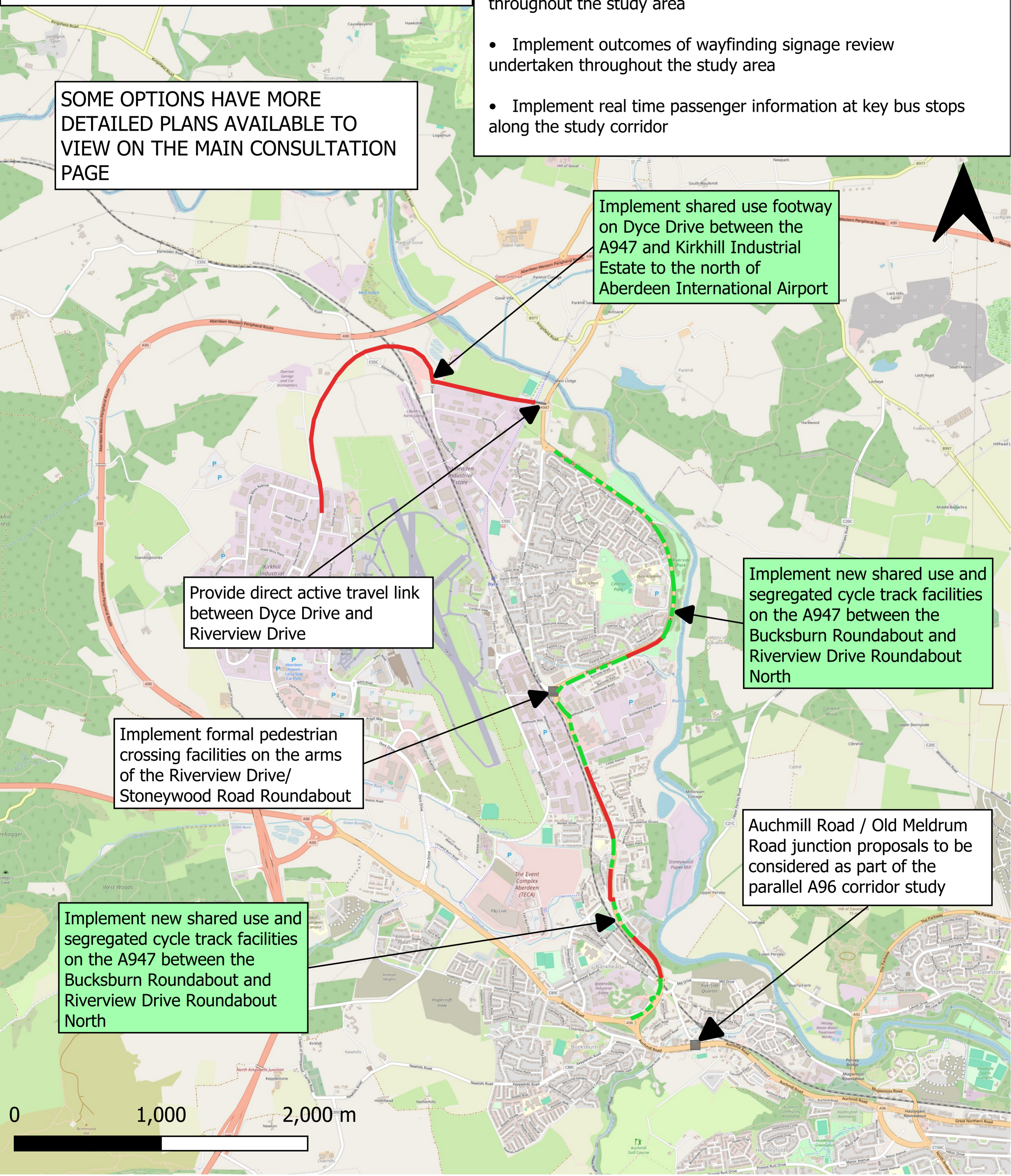
Implement new shared use and segregated cycle track facilities on the A947 between the Bucksburn Roundabout and Riverview Drive Roundabout North

Implement formal pedestrian crossing facilities on the arms of the Riverview Drive/ Stonewood Road Roundabout

Auchmill Road / Old Meldrum Road junction proposals to be considered as part of the parallel A96 corridor study

Implement new shared use and segregated cycle track facilities on the A947 between the Bucksburn Roundabout and Riverview Drive Roundabout North

0 1,000 2,000 m



What Do You Think?



The results of this consultation will be used to finalise the appraisal of the options within the five packages. This will help to define the recommended package of measures for further development and design. This may include measures from across the different packages that have been presented. The outcomes of this work will then be presented at a future Council committee to agree the next steps for progressing transport interventions in the A947 corridor study area.

Further feedback, including requests for paper copies of the feedback form, can be provided to the Council at transportstrategy@aberdeencity.gov.uk