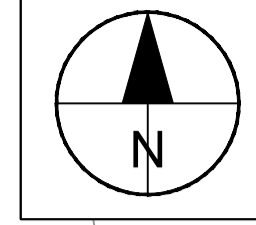


KEY	
	NEW KERB LINE
	FOOTWAY
	CARRIAGEWAY
	BUFFER STRIP
	SHARED USE FOOTWAY
	CYCLETRACK
	NEW WHITE ROAD MARKINGS
	NEW YELLOW ROAD MARKINGS
	TRAFFIC SIGNAL
	DROPPED KERB
	DROPPED TRANSITION KERB
	CONTROLLED TACTILE PAVING
	UNCONTROLLED TACTILE PAVING
	CORDUROY TACTILE PAVING
	PEDESTRIAN RAILING
	ACCESSIBLE BUS KERB
	RAISED TABLE
	PROPOSED SIGNAGE



AECOM

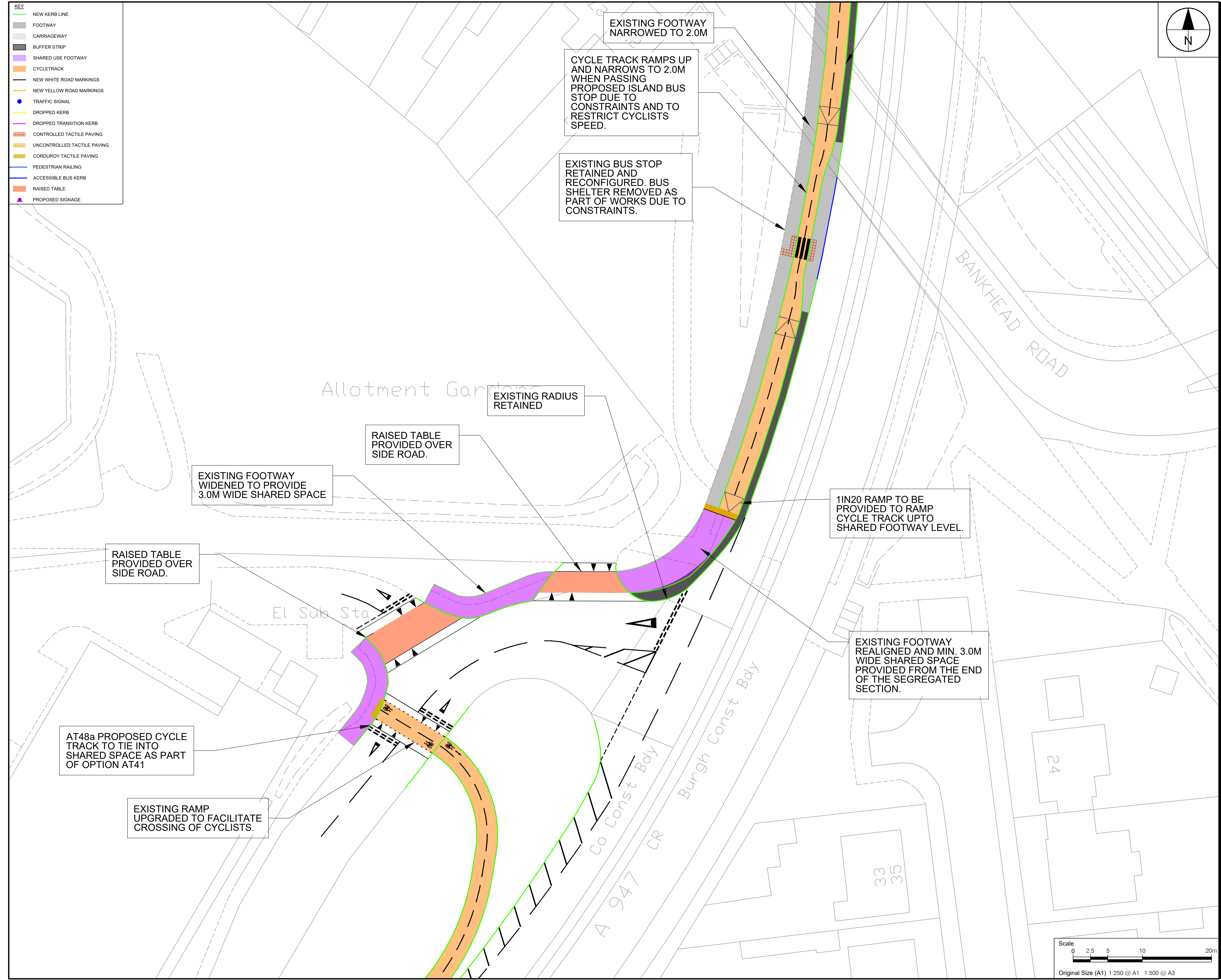
PROJECT
 A947 MULTI-MODAL
 STUDY - DETAILED
 APPRAISAL AND
 OBC



CLIENT

CONSULTANT
 AECOM
 Aurora
 120 Bothwell St
 GLASGOW, G2 7JS
 +44 (0) 141 248 0300 tel
 www.aecom.com

- NOTES**
- LAYOUTS PROVIDED ARE SOLELY FOR REPRESENTATIONAL PURPOSES AND DO NOT FORM PART OF A DESIGN PROPOSAL.
 - JUNCTIONS HAVE NOT BEEN CONSIDERED AS PART OF THE FEASIBILITY DRAWINGS AND WILL NEED RE-VISITED IF DESIGN IS TO BE PROGRESSED.



EXISTING FOOTWAY
 NARROWED TO 2.0M

CYCLE TRACK RAMP
 UP AND NARROWS TO 2.0M
 WHEN PASSING
 PROPOSED ISLAND BUS
 STOP DUE TO
 CONSTRAINTS AND TO
 RESTRICT CYCLISTS
 SPEED.

EXISTING BUS STOP
 RETAINED AND
 RECONFIGURED. BUS
 SHELTER REMOVED AS
 PART OF WORKS DUE TO
 CONSTRAINTS.

EXISTING RADIUS
 RETAINED

RAISED TABLE
 PROVIDED OVER
 SIDE ROAD.

EXISTING FOOTWAY
 WIDENED TO PROVIDE
 3.0M WIDE SHARED SPACE

RAISED TABLE
 PROVIDED OVER
 SIDE ROAD.

1IN20 RAMP TO BE
 PROVIDED TO RAMP
 CYCLE TRACK UP TO
 SHARED FOOTWAY LEVEL.

EXISTING FOOTWAY
 REALIGNED AND MIN. 3.0M
 WIDE SHARED SPACE
 PROVIDED FROM THE END
 OF THE SEGREGATED
 SECTION.

AT48a PROPOSED CYCLE
 TRACK TO TIE INTO
 SHARED SPACE AS PART
 OF OPTION AT41

EXISTING RAMP
 UPGRADED TO FACILITATE
 CROSSING OF CYCLISTS.

ISSUE/REVISION

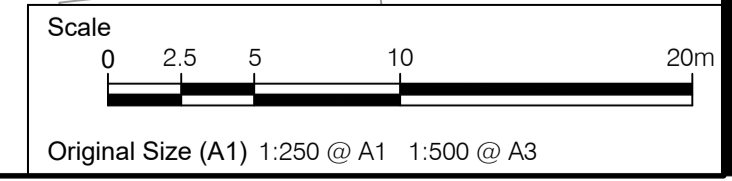
I/R	DATE	DESCRIPTION

KEY PLAN

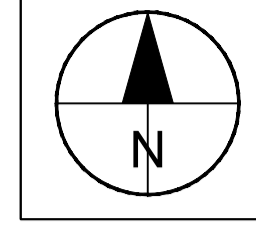
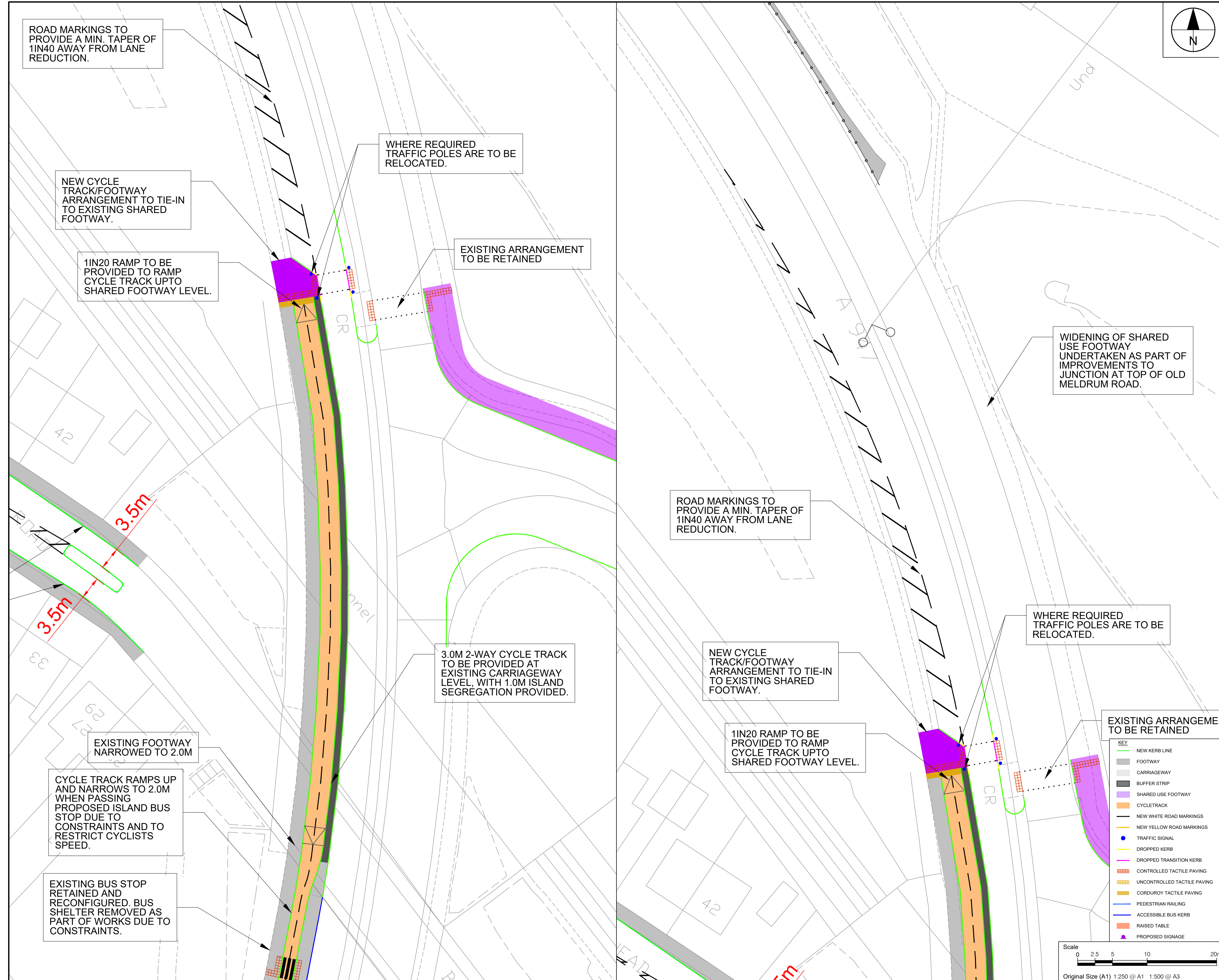
PROJECT NUMBER
 60709527

SHEET TITLE
 A947 Table 2 Detailed Design
 AT41b General Arrangement
 Sheet 1 of 2

SHEET NUMBER
 60709527-SHT-30-C-T2-0710



This drawing has been prepared for the use of AECOM's client. It may not be used, modified, reproduced or relied upon by third parties, except as agreed by AECOM or as required by law. AECOM accepts no responsibility, and denies any liability whatsoever, to any party that uses or relies on this drawing without AECOM's express written consent. All measurements must be obtained from the stated dimensions.



- NOTES**
- LAYOUTS PROVIDED ARE SOLELY FOR REPRESENTATIONAL PURPOSES AND DO NOT FORM PART OF A DESIGN PROPOSAL.
 - JUNCTIONS HAVE NOT BEEN CONSIDERED AS PART OF THE FEASIBILITY DRAWINGS AND WILL NEED RE-VISITED IF DESIGN IS TO BE PROGRESSED.

ISSUE/REVISION

I/R	DATE	DESCRIPTION

KEY PLAN

This drawing has been prepared for the use of AECOM's client. It may not be used, modified, reproduced or relied upon by third parties, except as agreed by AECOM or as required by law. AECOM accepts no responsibility, and denies any liability whatsoever, to any party that uses or relies on this drawing without AECOM's express written consent. Do not scale this document. All measurements must be obtained from the stated dimensions.